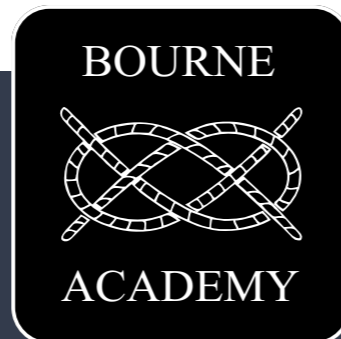


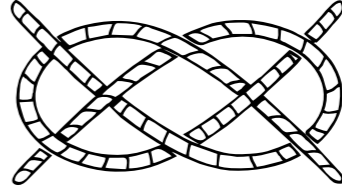
Notes:



Bourne Academy
Edinburgh Crescent, Bourne, Lincolnshire PE10 9DT
Tel: **01778 422365**
www.bourneacademy.org

Bourne Academy is part of South Lincolnshire Academies Trust



BOURNE

ACADEMY



Bourne Academy
PROSPECTUS 2026



Aspire, Challenge, Achieve

We truly believe that the education we offer at Bourne Academy is exceptional - and so is each one of our students. As a mixed non-selective secondary school we pride ourselves on being able to provide a personalised approach that best meets the needs of each and every individual child.

We are a highly successful oversubscribed school performing consistently in the **top 6% of all schools nationally**. Bourne Academy is also the top performing non-selective school in Lincolnshire and outperforms the vast majority of Lincolnshire grammar schools.

The school offers every student the educational pathway that will enable them to experience a strong learning journey, by creating a strong platform for Post-16 and Post-18 education.

The SLAT Sixth Form at Bourne Academy continues to grow and our students achieve outstanding results. In 2025, 50% of A-level and BTEC grades were the equivalent to A*-A.

Our strong belief is that Bourne Academy is a learning centre that encourages students to **Aspire, Challenge, Achieve**. As part of the wider family of the South Lincolnshire Academies Trust, we have access to strong professional partnership links with three other schools in our Trust, underpinned by outstanding educational thinking.

The school has a myriad of opportunities for students to access extra-curricular programmes and study support, often involving working closely with the local community, particularly in sport and the arts - including music, performance and the visual arts.

The school has recently invested in excellent new facilities and over the few next years, we will continue to expand with more developments.

We expect students to work hard and be committed to learning and we believe in high challenge that is coupled with high support, including exceptional pastoral care. We also demand high standards of behaviour that allow effective learning and teaching to take place.

Our high expectations for uniform standards, behaviour and student leadership programmes show that Bourne Academy is aspiring to be outstanding in all we do.

The South Lincolnshire Academies Trust is a Multi Academy Trust (MAT), which was established in 2016 and includes four schools, being Bourne Academy; Spalding Academy; Giles Academy and Cowley Academy. Each of our schools benefit from stable, secure and proven successful leadership, consisting of the Chief Executive Officer - Mrs Jemma Curson, and the team of Deputy Chief Executive Officers who work across all schools. Bourne Academy is led by Miss Katie Belcher who is the Head of School.

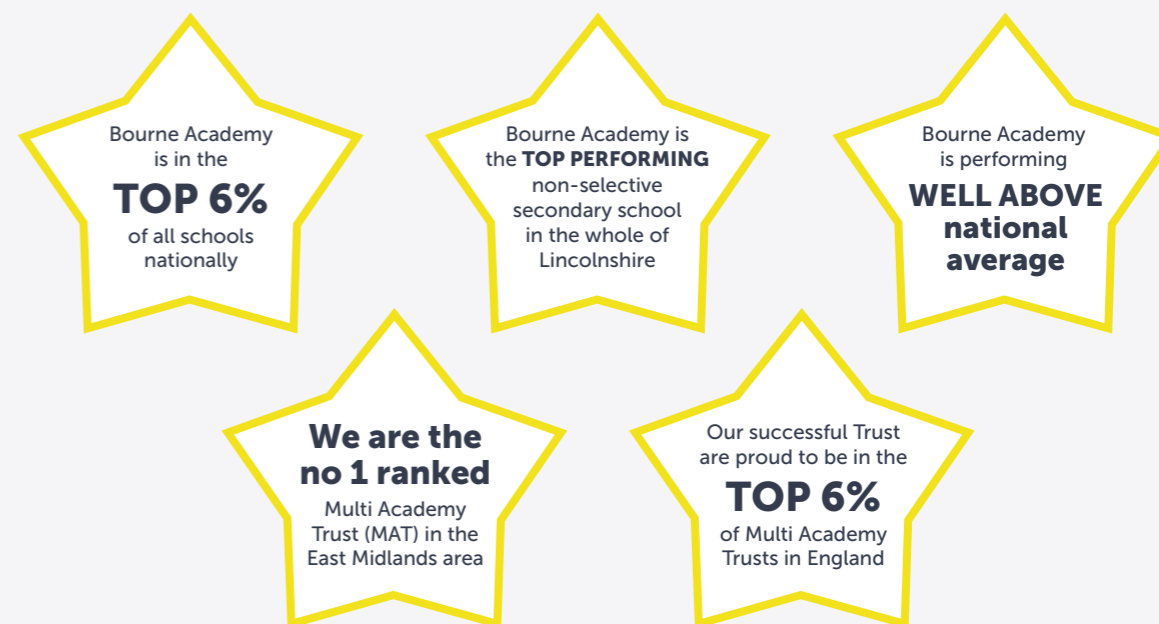
All of the staff welcome you to this fantastic and highly successful school, which both students and staff are proud to be part of.



Mrs Jemma Curson
Chief Executive Officer



Miss Katie Belcher
Head of School



Bourne Academy has a Progress 8 score of +0.59 in 2024 compared to the national average of -0.03.

Our successful, oversubscribed school is based upon:

- High expectations, with a firm, fair and consistently applied code of conduct which is understood by students, teachers and parents/carers;
- Positive, high profile rewards based on outcomes that all students can achieve, including exemplary effort and behaviour and an outstanding rate of attendance;
- Strong, mutually supportive relationships between our staff, students and their parents/carers;
- Developing students' confidence and self-esteem;
- A multi pathway curriculum designed so that each student can achieve their full potential in the core subjects together with a wide range of academic and vocational options;
- Providing appropriate support for students of all abilities;
- Working in partnership with our other Trust schools to further improve the school delivering the best outcomes for students;
- A superb data tracking and reporting system providing regular feedback to parents/carers on their child's progress against aspirational targets and on their attitude to learning;
- High quality, regular feedback to students, both written and oral, with readily accessible information on the next steps in their learning;
- High quality PSHE (Personal, Social, Health & Economic) and SMSC (Spiritual, Moral, Social & Cultural) programmes which equip our students for life in Britain in the 21st century;
- Investing wisely in the continuous upgrading of buildings, classrooms and facilities to provide our students with an attractive environment that helps to optimise their learning.

Our curriculum meets the needs of all students

At Bourne Academy, we are immensely proud of the outcomes our students achieve through our curriculum, including our exceptional GCSE and BTEC vocational results.

As a non-selective school, we recognise that every student has individual talents and abilities and we are committed to providing a curriculum which is broad, rich and balanced in order to meet the needs of all. Students are encouraged to pursue a range of subjects reflecting their own interests and aspirations.

Our curriculum in every subject is planned to ensure students leave with exceptional outcomes, both in their exams and personal development.

“Students are very well cared for.”

OFSTED INSPECTION MAY 2022

“School leaders lead with a strong moral purpose and vision focused on what is right for students.”

OFSTED INSPECTION MAY 2022

We encourage every student to strive for personal excellence as well as leaving with the right qualifications to prepare them for the next stage of their educational journey.

Each subject covers the content of the National Curriculum and puts high challenge, enjoyment and breadth of experience at the heart of learning.

The PSHE (Personal, Social, Health and Economic) programme forms a vital part of every students' education. All students in Key Stage 3 will receive a 1 hour lesson every week. Special events also take place throughout the year to further enhance PSHE.

Through our innovative curriculum, we aim for students to Aspire, Challenge and **ACHIEVE**:

- A Academic:** A curriculum that has a broad range of subjects, and is challenging, accessible and inclusive for all.
- C Choice:** Our students abilities are diverse and they have many talents. It is extremely important that we enable all students to have wide-ranging positive learning experiences and to maximise future opportunities to nurture their talents.
- H High Standards:** We have ambitious programmes of study to ensure that our students achieve their potential, underpinned by high standards of behaviour, uniform and conduct.
- I Intelligent Assessment:** Assessment to inform teaching to ensure continuity and progression between Key Stages, supported by forensic teacher-marking to support student learning and key curriculum intervention.
- E Equipped:** A coherent programme of personal, health, social, careers and economic education that ensure students are exposed to the experiences and opportunities they need to succeed.
- V Values:** We promote students to value equality and diversity, demonstrating mutual respect and understanding of those with different cultures, faiths and beliefs, thus mirroring the fundamental British values of democracy, the rule of law and individual liberty.
- E Esteem:** Belief in and building of students wellbeing to develop confident, resilient and independent learners who can be proud of their achievements.



Key Stage 3 (Years 7 - 9)

Key Stage 3 aims to provide a secure foundation of knowledge, skills and understanding before specialising at Key Stage 4.

Year 7 students are taught in mixed ability groups in the first term, then at the end of September, teacher assessments will be used to set students new timetables which will remain for the rest of Year 7.

Students are continually assessed to ensure they remain in the most appropriate group.

At Key Stage 3, students will have a timetable made up of the following subjects:

- English
- Mathematics
- Science
- Art & Design
- Citizenship
- Drama
- Food Technology
- French
- Geography
- History
- ICT/Computing
- Music
- PE
- Religious Studies

“Bourne Academy has developed an ambitious and well-planned curriculum.”

OFSTED INSPECTION MAY 2022

Key Stage 4 (Years 10 - 11)

During Year 9, students will choose from a mix of academic, technical and vocational subjects to study in Years 10 and 11.

At Key Stage 4, all students study and take GCSE examinations in the subjects of:

- English Language and English Literature
- Mathematics
- Science

One hour of PE is also included in the timetable for all students.

Students can then choose from a range of GCSE and BTEC subjects, which currently include:

- Art & Design
- Biology
- Business Studies
- Chemistry
- Creative Media Production
- Digital Information Technology
- Food Preparation & Nutrition
- French
- Geography
- Health & Social Care
- History
- Music
- Performing Arts
- Physics
- Psychology
- Religious Studies
- Sociology
- Sport Science
- Travel & Tourism





Enrichment and extra-curricular

Our enrichment and extra-curricular programme of activities is designed to be inclusive for all and not only to develop academic skills, but improve self-confidence, life-skills and leadership experiences as well as being enjoyable.

Sport

The PE department run a wide range of lunchtime and after-school sessions as well as sports clubs, inter-school and House competitions. The sports available change during the winter and summer months and include athletics, basketball, cricket, dance, football, hockey, netball, rounders, rugby, table tennis and trampolining.

Drama and Music

The drama and music departments work closely with each other to showcase a variety of productions and events for students to be involved with. These events are fully inclusive so anyone can get involved, whether that is performing on stage in a leading role, playing in a band or being part of the production team.

Bourne Academy are proud to have been awarded the prestigious **Artsmark Platinum Award** in 2025.



Artsmark Platinum Award
Awarded by Arts Council England

Extra-curricular sessions

During lunchtime and after-school there are many subject related clubs and activities for students to participate in. These include subject interventions, revision and homework sessions plus clubs and performances for art, drama and music.

Aspire Passport

We have developed a reward passport for all students which embodies our school ethos of Aspire, Challenge and Achieve. Students can complete Bronze, Silver and Gold challenges to earn badges, certificates, gift vouchers and reward activities.

The Duke of Edinburgh's Award

This is a fun and rewarding programme designed to build confidence and improve essential skills for life such as resilience, problem solving, teamwork and communication.

Library

All students are automatically members of the Library and it does not cost anything to join. The Library is an active learning environment and can be used at morning break and lunchtime for homework. There are also opportunities for students to become Junior Librarians and be involved in the running of the Library.

House system

All students belong to a House where there will be House competitions, charity and community events plus other opportunities for students to earn their House points.

Student voice

We have elected student members who play an important part in decision making in the school. Students are involved in meetings with the Senior Leadership Team, staff interviews and many other elements of school life.

Exceptional pastoral care and support

We pride ourselves on the outstanding pastoral support that students receive at Bourne Academy.

All young people are likely to face difficulties at some point during their school life, with the pressures of social media, friendship groups, school life and everything else that they have to contend with growing up in modern day Britain. We work hard to ensure that school is a safe, secure and supportive environment for our students.

We have a large team of exceptional full-time non-teaching pastoral staff to ensure that students receive the individual support and guidance that they need - whenever they need it. The pastoral support team build excellent links to support parents and carers.

As our students grow, it is important that they have a sense of identity within the school and their year group. Every year group wears a different coloured tie and has their own area of the school at break and lunch, helping them to feel safe and secure in their year group community.

They will also join a House group which helps to foster a sense of identity and community across different year groups. Throughout the year students will take part in 'House activities' and have regular House assemblies. The form tutor provides daily pastoral support and is the first point of contact for any issues that may arise.

We have a dedicated safeguarding team in school committed to keeping our young people safe. Any student or parent can contact them about any issues - including using a dedicated 'worried@' email address found on the school website homepage.

Bourne Academy insists on excellent behaviour in every lesson, around school and in the community. Although every student is aware and understands the school's sanctions, these high standards of behaviour are fostered through a continuing focus on recognising and rewarding students.

Students receive rewards on a regular basis for hard work, looking smart, attendance and being helpful within the school community. Our students are fantastic and we like to celebrate the things that they do well.

Parents are able to see how many green stamp rewards their child earns through the 'Show My Homework' app.

The Ofsted Inspection in May 2022 stated that:

- Students speak positively about the school's safe and respectful culture.
- There is a strong respect for diversity.
- Students can talk easily to staff and know that they will be listened to.
- Students are nurtured to be resilient and have opportunities to develop their character.
- Leaders have high expectations of students behaviour and conduct.
- Students are keen to participate in many sporting, music and drama activities, trips, competitions and productions.

"Students, parents and carers recognise and appreciate that the pastoral care is exceptional."

OFSTED INSPECTION MAY 2022



Transition and key dates

We will work with you to ensure that your child has a smooth transition to our school during this exciting and anxious time for your family.

Open Evening

Our Open Evening is for students in Years 4 to 6 and their parents/carers to visit the school and see everything our school has to offer. This event takes place in the autumn term, therefore conveniently timed before making your application to school.

Application deadline

Applications to Bourne Academy will need to be made to Lincolnshire County Council by **31st October** (this is the same date every year). Due to the high demand for places at our school, we strongly advise that you put Bourne Academy down as your first choice.

National Offer Day

National Offer Day on 1st March is the date when Lincolnshire County Council will send out details of which school your child has been allocated to start in September. You will then have a dedicated member of staff at Bourne Academy to liaise with before starting school.

Transition pack

Every student who has been offered a place to join Bourne Academy will receive a special transition pack, which will contain useful information for parents/carers and students. We also include some special treats inside as well.

“As a parent, I cannot express highly enough how welcoming and supportive the school has been.”

PARENT FEEDBACK

Primary school visits

Our Transition Team will visit your child's primary school in the summer term to talk about your child's strengths and any particular needs they may have as well as clubs and interests. Your child will be informed about what to expect at Bourne Academy and how it differs from primary school.

Taster Day

In July, your child will take part in a variety of lessons and activities plus they will be able to have lunch in the canteen if they wish.

Induction Day

We stagger the start of term in September so Year 7 students start a day before other Year groups, which helps new students familiarise themselves with the school. The first part of the day will be spent in tutor groups, looking at timetables and other settling in tasks. The students will spend the rest of the day in their lessons, meeting their teachers and finding out about each other.

Starting school in September

We have a full programme of activities in place for when students start school in September to help them get to know each other, make new friends and quickly settle into school life.

How the school day is structured

The school day is structured with four lessons in the morning and one in the afternoon. This is to improve the learning of our students by maximising the amount of morning learning time.

At morning break and lunchtime, each Year group have their very own yard, which is fully supervised by the Pastoral Year Lead and teaching staff. There are additional food outlets located on the yards.

During lunchtime and after-school there is an extensive extra-curricular programme to allow our students to develop new interests and enhance the knowledge learnt in the classroom.

Learning continues in the Registration / Assembly / PSHE sessions with a variety of different activities timetabled every day.

Visit www.bourneacademy.org/term-dates for term dates.

The School Day

8.40am to 8.50am	AM registration
8.50am to 9.50am	Period 1
9.50am to 10.50am	Period 2
10.50am to 11.10am	Morning break
11.10am to 12.10pm	Period 3
12.10pm to 1.10pm	Period 4
1.10pm to 1.50pm	Lunch
1.50pm to 2.50pm	Period 5
2.50pm to 3.15pm	Registration / Assembly / PSHE
3.15pm onwards	After-school provision





The school uniform

The way that students dress is important to create a smart, disciplined and purposeful academic environment, and as role models to promote the public image of Bourne Academy in the wider community.

The school uniform consists of:

- Black blazer with Bourne Academy badge
- Plain black V-neck sweatshirt/pullover
- Bourne Academy year group tie
- White shirt
- Black trousers or black skirt with SLAT Trust emblem
- Black leather effect school shoes
- Socks (plain black) or tights (flesh coloured or black)

As well as the main school uniform, students will also require a PE kit and there are regulations around hairstyles, jewellery, make-up and coats to maintain smart and professional standards.

Visit www.bourneacademy.org/uniform for the full uniform policy.

“You treat every student as an individual, understanding that every child is unique by catering for different needs and abilities.”

PARENT FEEDBACK

“Students are very proud of their school.”

OFSTED INSPECTION MAY 2022

School tie

Each year group wears a different coloured tie to easily identify each year group. Students will wear the same coloured tie throughout years 7 to 11.

House badge

Every student wears a round coloured badge on the left lapel of their school blazer which identifies the House they belong to.

Helping to keep uniform more affordable

The only compulsory items of clothing with a school logo are the school blazer, school trousers and school skirts. By not having logos on jumpers or PE clothing, this helps keep costs down as well as allowing you to purchase high street clothing.

The school recognises how important it is to provide quality and affordable clothing for families. At Bourne Academy, the cost of a blazer, jumper, school tie and trousers or skirt with several white shirts for a student will be under £100*.

If families are experiencing particular financial difficulty, the school may be able to assist with the provision of uniform as necessary. Please contact the school for further details.

** correct at time of printing*

Quality and affordable catering

Our canteen is managed in-house and all meals are freshly made in our kitchen every day. The canteen is open to students for breakfast, morning break and lunch.

We operate a cashless catering facility where students can purchase a hot main meal for only £2.50 per day*.

Our main meal menu changes every day on a six-week cycle and there are also jacket potatoes, sandwiches, wraps and salad bar options available.

Healthy eating is important to us, which is why we use quality ingredients and reduce the amount of salt, sugar and fats in our recipes.

When students start school, they will receive a cashless payment card. Parents/carers can then top-up the card via a management portal, set daily limits and see detailed statements.

If students are entitled to free school meals, they will have £4.00 per day* to use with their cashless payment card. Parents/carers can still top this up if they wish.

** correct at time of printing*

“You are incredible at caring for us and encouraging us to try things.”

STUDENT FEEDBACK



Follow us to keep updated

It is important to us that we keep parents, carers and students updated with everything that is going on at our school and we do this in many ways.

At the end of every week during term-time, the Head of School will send a weekly update to parents with important information, reminders and celebrating the achievements of our students.

We also publish regular news articles and photos on our website and official social media platforms.

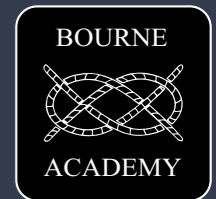
You can find us on the following links:

- www.instagram.com/BourneAcademy
- www.facebook.com/BourneAcademyLincs
- www.x.com/BourneSLAT





Excel at the SLAT Sixth Form



South Lincolnshire Academies Trust have a large Sixth Form at Bourne Academy with its very own purpose-built Sixth Form Centre. We also welcome students from Spalding Academy, Cowley Academy and other secondary schools across Lincolnshire, Rutland and Cambridgeshire.

There are a variety of different study pathways where students can choose either 3 or 4 A-levels, 3 or 4 BTEC vocational qualifications or 'mix and match' a combination of both A-level and BTEC qualifications. This enables every student to choose the best subject options available.

The current choice of A-level and BTEC subjects include:

- Applied Science
- Art & Design
- Biology
- Business
- Chemistry
- Creative Digital Media Production
- English Language
- English Literature
- French
- Geography
- Health & Social Care
- History
- Information Technology & Computing
- Mathematics
- Music Performance
- Performing Arts
- Physics
- Psychology
- Religious Studies
- Sociology
- Sport & Physical Activity
- Travel & Tourism

Outstanding results

Our students achieve outstanding results in both A-levels and BTEC qualifications. Over the last six years, our students have achieved an average **99%** pass rate for both A-level and BTEC qualifications.

In 2025, our students achieved the following grades:

- **99.8%** pass rate for both A-levels and BTECs
- **50%** of A-level and BTEC grades were the equivalent to A*-A
- **96%** of BTEC grades were Distinction* to Merit (equivalent to A*-C at A-level)
- **83%** of A-level English Language grades were A*-B
- **70%** of A-level History grades were A*-B
- **100%** of BTEC Music Performance grades were Distinction* (equivalent to A* at A-level)
- **93%** of BTEC Health & Social Care grades were Distinction* or Distinction (equivalent to A*-A at A-level)

Sixth Form Open Evening

The next Sixth Form Open Evening at Bourne Academy will take place on **Thursday 13th November 2025** from 6.00pm to 8.00pm.

At the Open Evening there will be presentations plus you will have the opportunity to take a guided tour with our students and meet and speak to students and staff from the wide variety of subjects on offer.

Visit www.bourneacademy.org/sixthform for further information about the Sixth Form.