

Job of The Week

Arborist (Tree Surgeon)

Key Skills

- Physical skills like movement and co-ordination
- To be thorough and pay attention to detail
- The ability to work well with others
- Concentration skills
- The ability to work well with your hands
- Knowledge of public safety and security
- The ability to use, repair and maintain machines and tools
- Patience and the ability to remain calm in stressful situations
- To be able to carry out basic tasks on a computer or hand-held device

Salary
£25,000 – £35,000

Working hours
40 – 43 per week

Aspire | Challenge | Achieve

Arborist (Tree Surgeon)

College

You could do a college course to get some of the skills and knowledge you need as a tree surgeon.

Relevant subjects include:

- Arboriculture
- Forestry and arboriculture
- T Level in Agriculture, Land Management and Production

Entry requirements

Entry requirements for these courses vary.

Apprenticeship

You could begin your career by doing an apprenticeship.

For example:

- Arborist Level 2 Intermediate Apprenticeship
- Forest Craftsperson Level 3 Advanced Apprenticeship

These usually take a minimum of 2 years to complete and combine on-the-job training with learning off site

Entry requirements

You'll usually need:

- Some GCSEs, usually including English and maths, or equivalent, for an intermediate apprenticeship
- 5 GCSEs at grades 9 to 4 (A* to C), or equivalent, including English and maths, for an advanced apprenticeship

University

You can study for a foundation degree, higher national diploma or degree in:

- Forestry
- Arboriculture
- Countryside management
- Forest management
- Woodland ecology and conservation

Entry requirements

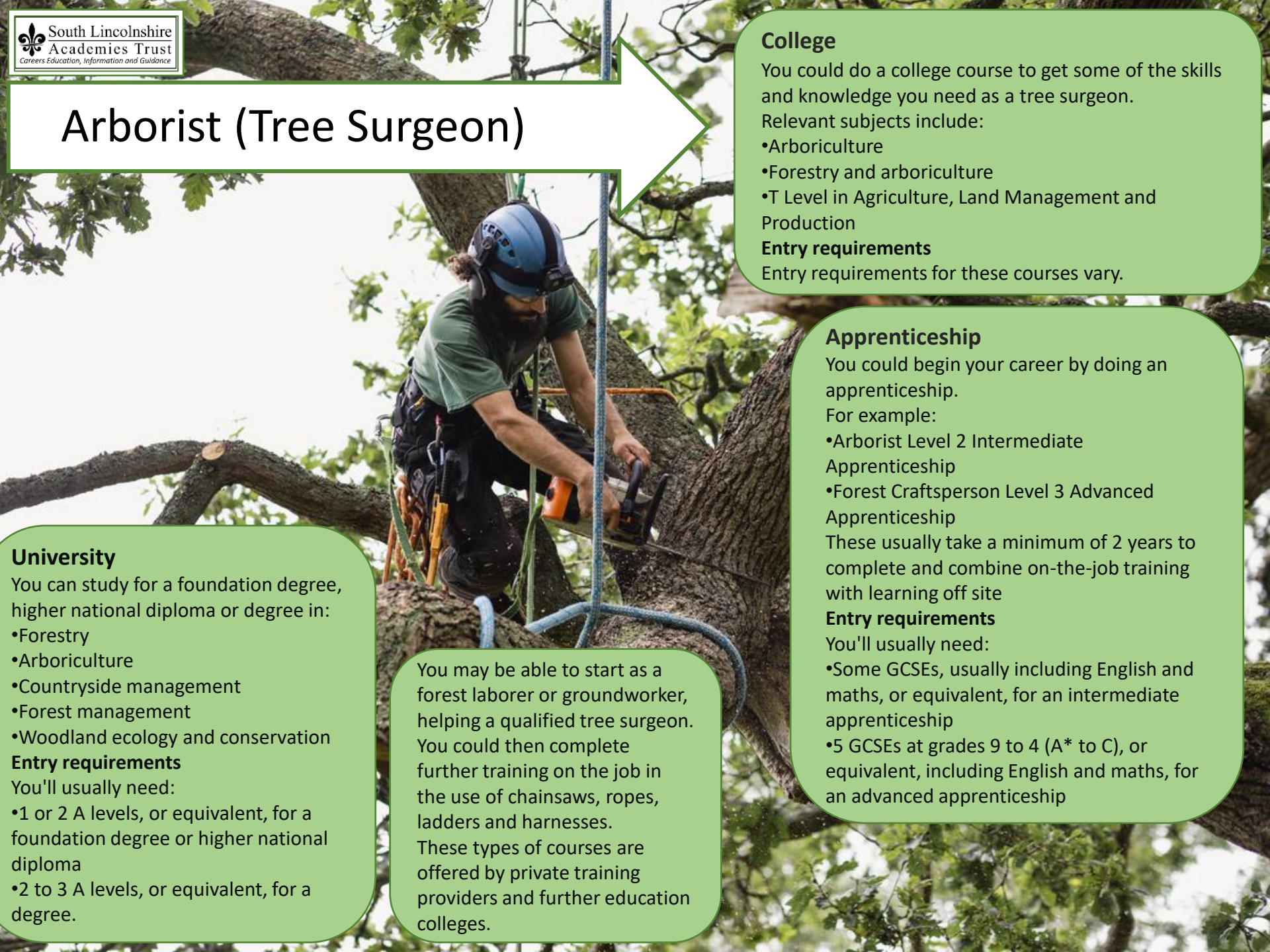
You'll usually need:

- 1 or 2 A levels, or equivalent, for a foundation degree or higher national diploma
- 2 to 3 A levels, or equivalent, for a degree.

You may be able to start as a forest laborer or groundworker, helping a qualified tree surgeon.

You could then complete further training on the job in the use of chainsaws, ropes, ladders and harnesses.

These types of courses are offered by private training providers and further education colleges.



Career Path and Progression

- Become a supervisor or manager
- Train to be an [arboricultural officer](#)
- Start your own business
- Move into recreational tree climbing and take people into treetops as an outdoor activity

Day to Day tasks

- Identify hazards caused by trees
- Climb trees to cut back or remove branches
- Cut down and remove trees and stumps
- Plant trees and assess their health
- Work with clients to produce tree survey reports

Working conditions

You could work in parks and gardens, on the streets, in woodland or on rail tracks.

Your working environment may be outdoors in all weathers, at height, dusty and physically demanding.

You may need to wear safety clothing and use safety equipment.



Labour Market Information

In the Careers section of the school website you can find the useful comparison tool the 'Labour Market Information widget'.

Use the widget to compare different job roles in any employment sector or relating specifically to the 'Job of the Week'.



Forestry and related workers

Weekly Pay £570	Annual Pay £29,640
Hours/Week 43h	Hourly Pay £13

Workforce Change (projected)

Contraction
-5%

The workforce is projected to contract by -5% over the period to 2035, losing 400 jobs.

You might find this job in
Agriculture, etc

[More info](#)

[Clear card](#)

Agricultural and fishing trades n.e.c.

Weekly Pay £600	Annual Pay £31,200
Hours/Week 44h	Hourly Pay £14

Workforce Change (projected)

Growth
8.6%

The workforce is projected to grow by 8.6% over the period to 2035, creating 3,500 jobs.

You might find this job in
Agriculture, etc
Wholesale trade
Libraries, etc

[More info](#)

[Clear card](#)

Horticultural trades

Weekly Pay £470	Annual Pay £24,440
Hours/Week 43h	Hourly Pay £11

Workforce Change (projected)

Growth
8.6%

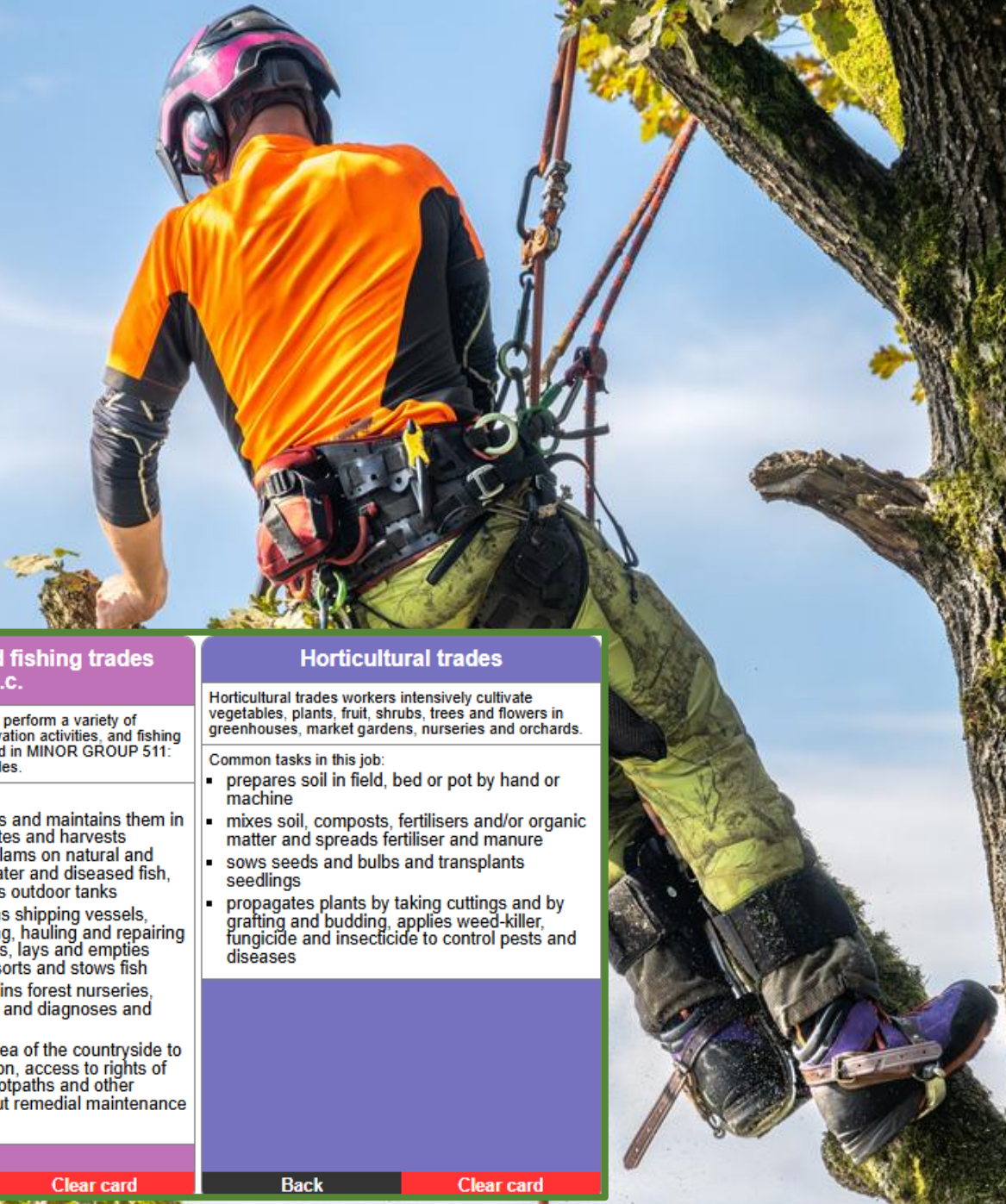
The workforce is projected to grow by 8.6% over the period to 2035, creating 800 jobs.

You might find this job in
Agriculture, etc
Retail trade

[More info](#)

[Clear card](#)

Labour Market Information



Forestry and related workers

Forestry workers perform a variety of tasks related to the planting, cultivation and protection of trees.

Common tasks in this job:

- prepares ground for planting by clearing vegetation and other debris
- drains and ploughs land and erects and maintains fences as necessary
- collects seeds, plants and prunes trees and selects and marks trees for felling
- fells trees using axe or power saw and saws wood into required lengths

Back

Clear card

Agricultural and fishing trades n.e.c.

Job holders in this unit group perform a variety of agricultural, practical conservation activities, and fishing tasks not elsewhere classified in MINOR GROUP 511: Agricultural and Related Trades.

Common tasks in this job:

- nets river fish and feeds and maintains them in spawning pens, cultivates and harvests oysters, mussels and clams on natural and artificial beds, treats water and diseased fish, and empties and cleans outdoor tanks
- navigates and maintains shipping vessels, assists with the shooting, hauling and repairing of fishing nets, prepares, lays and empties baited pots, and guts, sorts and stows fish
- establishes and maintains forest nurseries, forestry and woodland, and diagnoses and treats diseased trees
- patrols a designated area of the countryside to monitor damage, erosion, access to rights of way and the state of footpaths and other facilities, and carries out remedial maintenance work as necessary

Back

Clear card

Horticultural trades

Horticultural trades workers intensively cultivate vegetables, plants, fruit, shrubs, trees and flowers in greenhouses, market gardens, nurseries and orchards.

Common tasks in this job:

- prepares soil in field, bed or pot by hand or machine
- mixes soil, composts, fertilisers and/or organic matter and spreads fertiliser and manure
- sows seeds and bulbs and transplants seedlings
- propagates plants by taking cuttings and by grafting and budding, applies weed-killer, fungicide and insecticide to control pests and diseases

Back

Clear card

Keep looking...

Use these links to learn more about our job of the week, consider the various pathways leading to the career, what you can be doing now to help yourself and other roles in the industry

Take a look at these short videos for inspiration...



[How to fell an English Oak Tree - With Essex Tree Care](#)



[Meet Izzy the Arborist \(Tree Surgeon\)](#)



[What qualifications are needed to climb and work on a tree? - Tree Surgery](#)



[Careers on Hampstead Heath: Apprentice Arborist](#)

Useful Websites

[Become a Tree Warden - Tree Council](#)
[Volunteer Tree Wardens](#)

[Volunteering | Forestry England](#)

[Volunteer With Us - Woodland Trust](#)

[Arboricultural Association - Membership Information](#)

